



B L U M I L

USER MANUAL

Table of Contents

Introduction	3
Safety warnings	4
Installation.....	8
Segway i2, x2	9
Segway i2 SE, x2 SE.....	12
Ninebot C, E	14
Airwheel S3, S5	15
Adjustments.....	16
Adjustment 1: The Landing Feet	16
Adjustment 2: Gravitational centering.....	18
Adjustment 3: Sensor plates	20
Riding the BLUMIL.....	22
Switching on/off	24
Steering column installation.....	27
Controlling the Blumil.....	28
Mounting and dismounting the Blumil	29
Charging the Blumil	30
Blumil Warranty	31
Disclaimers	32
Returns	Błąd! Nie zdefiniowano zakładki.

Introduction

Congratulations! Welcome to the BLUMIL family!

BLUMIL is a unique seating solution for your personal transporter (PT). BLUMIL makes it possible for millions of people around the world to enjoy their PT while seated. Whether you own a Segway, Ninebot or Airwheel – BLUMIL may be adapted for you.

In a world where PT's are designed only for standing, BLUMIL saw the opportunity to enjoy their speed and versatility from a seated position. Thanks to BLUMIL's award-winning design,

you can effortlessly move, steer, and stop your PT while seated. BLUMIL's super simple installation process takes less than 30 minutes and all the tools are included!

Grab your helmet and let's go for a ride, you are about to experience TRUE FREEDOM with your BLUMIL!

Safety warnings

It is your responsibility to ensure that you read and meet all of the rider requirements listed below and are aware of all risks of riding as listed in the BLUMIL and Gyroscopic Transporter manuals before attempting to ride with BLUMIL.

- You must be able to stay on your BLUMIL. If you slip off the seat you will fall and risk being injured.
- To control the Gyroscopic Transporter with BLUMIL you must be able to move your center of gravity by leaning forward and backward. A rapid stop will require leaning backward aggressively. Be sure you can perform all maneuvers effectively before riding.
- You must be able to deploy and retract the parking mechanism in one swift motion with only one hand.
- You must be able to operate the steering handle.
- You must be prepared to deal with a safety shutdown. A safety shutdown provides approximately 10 seconds to exit the seat of BLUMIL and/or deploy the parking mechanism before the Gyroscopic Transporter powers down and falls over.
- You must have reasonable mental aptitude and be free from impairment in order to apply judgment while operating your Gyroscopic Transporter with BLUMIL.
- In spite of the precautions taken by Gyroscopic Transporter and the makers of the BLUMIL, there is still the potential of a fall. If you cannot survive a fall, you should not ride with BLUMIL.

Risks

It is your responsibility to ensure that you read and understand all of the risks of riding before you attempt to ride the Gyroscopic Transporter with BLUMIL.

- Riding the Gyroscopic Transporter risks serious injury or death from falls, loss of traction, loss of balance, collisions and other accidents.
- To reduce the risk of injury, read the Gyroscopic Transporter manual and the BLUMIL manual to learn how to safely mount, dismount and ride.
- Follow all safety guidelines for riding the Gyroscopic Transporter with BLUMIL.
- Do not ride with BLUMIL unless it has been properly adjusted to your individual weight distribution and dimensions.
- When a Gyroscopic Transporter fails, it falls over. BLUMIL will only prevent this when the parking mechanism is deployed, as defined in this manual.
- Only mount or dismount BLUMIL while the parking mechanism is properly deployed.
- Deploy and retract the BLUMIL parking mechanism only when on smooth, solid, level surfaces.
- Do not attempt to retract the BLUMIL parking mechanism while the Gyroscopic Transporter is “Off”. The Gyroscopic Transporter will fall over.
- The parking mechanism must be properly deployed and retracted to avoid injury. This is done with one swift pull or push of the parking lever. Slowly retracting or deploying the parking mechanism may result in the Gyroscopic Transporter

being caught in “Standby” mode or “Riderless Balance Mode” without the full stability of the parking mechanism or without the Gyroscopic Transporter “Balance Mode” engaged which auto-balances with BLUMIL. Falls and injury may result.

- Do not attempt to ride when the battery indicator on the Infokey displays no bars.
- The Gyroscopic Transporter floats to a stop as the center of gravity is shifted opposite the direction of travel. Failure to begin stopping early enough can result in collision, accident, serious injury or death. Always give yourself enough room to safely stop.

CAUTION: *Due to the lower center of gravity with BLUMIL, the distance required for stopping may be greater, requiring more time to stop.*

- Be aware that the Gyroscopic Transporter programming causes the BLUMIL to re-align itself in a parallel direction to any slope (it will realign itself to face downhill). The rider must always have a hand on the steering lever to control this movement.
- Keep obstructions such as straps, clothing, jewelry, and bags away from the wheels and other moving parts.
- Be aware of the foot rest at all times as it may catch on walls, steep inclines, or other obstructions and cause Gyroscopic Transporter instability with BLUMIL.
- Do not deploy the parking mechanism while moving, this may result in fall and injury.
- Do not go onto surfaces steeper than 20°.
- Do not ride Blumil if the pressure in tyres is not enough or

uneven.

- Do not attempt to use any stairs to move between different levels, as it may result in an accident.
- On steep surfaces covered in ice, oil or other slippery substances, please stay extra cautious.
- While using and servicing the Blumil, some body parts may get caught in/squeezed in the elements of Blumil. You need to be very careful. After regulating the Blumil, always make sure that the bolts are screwed securely.
- If the seat is exposed directly to sunlight, its temperature may significantly increase.
- Please keep away from children under the age of 5 (choking hazard).
- Protect from fire and flammables.
- To carry the Blumil, use the side handles, preferably carry by two people.



Installation

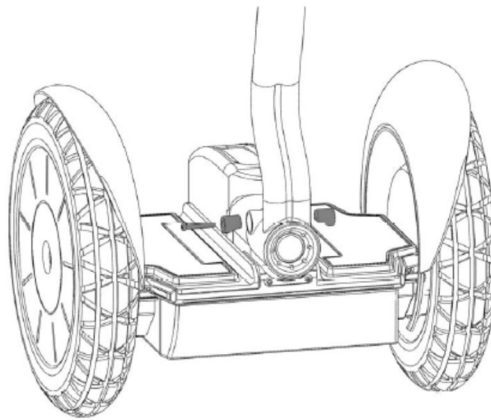
As the Blumil fits various gyroscopic transporters, please refer to the appropriate section of the manual, relevant to your device:

- Segway i2, x2
- Segway i2 SE, x2 SE
- Ninebot C, E
- Airwheel S3, S5

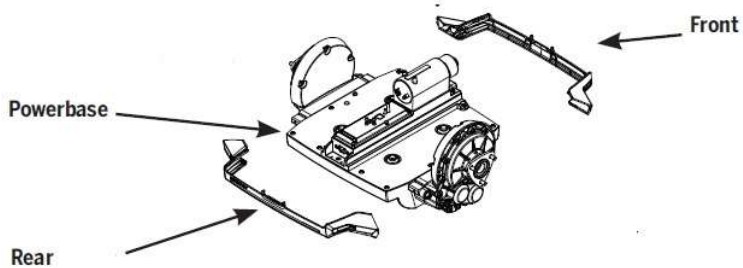
Installation of the BLUMIL to the Gyroscopic Transporter base is quite simple and takes around 10 minutes. All necessary tools are included.

Segway i2, x2

Step 1: Remove the locking wedges to disassemble the steer frame by removing the 5mm Hex bolt. Remove the Lean Steer Frame.



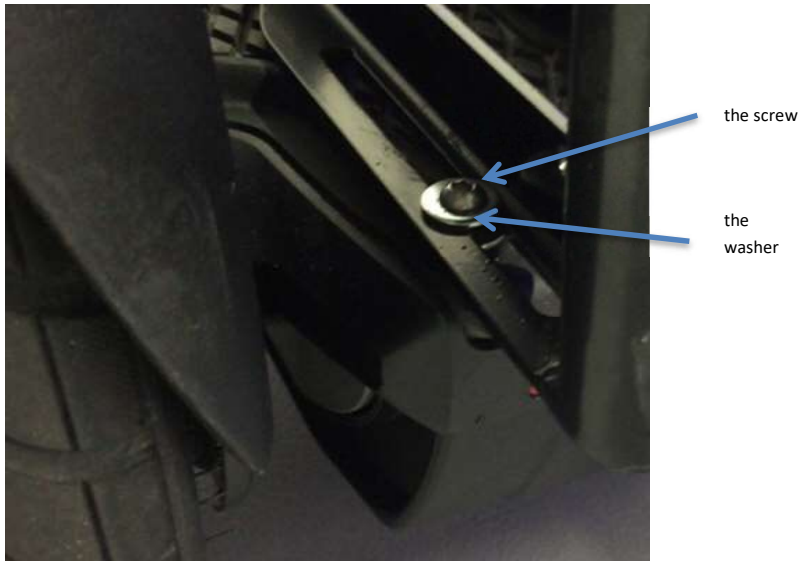
Step 2: Remove the bumper frames by removing the eight (8) – 4mm Hex screws.



Step 3: Remove the floor mats

Step 4: Remove the four (4) corner plate deck bolts with the T27 wrench (included).

Step 5: Place the BLUMIL® unit on the Segway® base and use the attached (4) corner screws to fasten it to the base. Place a washer underneath each screw.

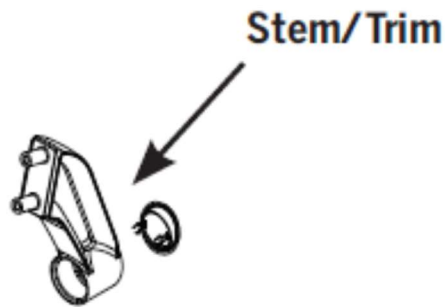


Step 6: Install the provided steering hub adapter. The attached Blumil steering column slides into the slot. As seen on the picture below, the adapting kit has to be installed and firmly screwed.

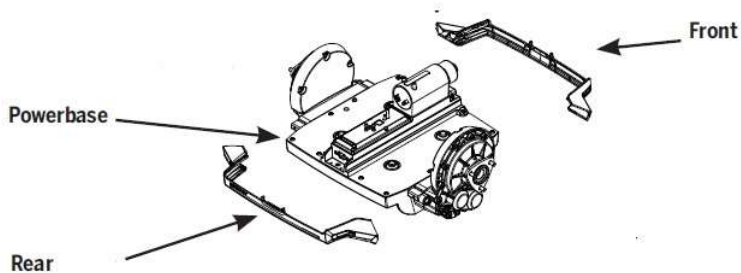


Segway i2 SE, x2 SE

Step 1: Remove the red cap with the Segway logo and remove the 4 screws. Remove the Lean Steer Frame.



Step 2: Remove the bumper frames by removing the eight (8) – 4mm Hex screws.



Step 3: Remove the floor mats

Step 4: Remove the four (4) corner plate deck bolts with the T27 wrench (included).

Step 5: Place the BLUMIL unit on the Segway® base and use the attached (4) corner screws to fasten it to the base. Place a washer underneath each screw.

Step 6: Install the provided steering hub adapter with the Segway® screws used in step 1. The attached Blumil steering column slides into the slot.

Ninebot C, E

Step 1: Remove the four (4) screws that are on either side of the Ninebot base.

Step 2: Place the provided adapters on the sides of the Ninebot base and use the attached four (4) screws to fasten them to the base.

Step 3: Place the BLUMIL unit on the Ninebot® base and use the attached four (4) corner screws to fasten it to the adapters. Place a washer underneath each screw.

Step 4: Install the provided steering hub adapter. The attached Blumil steering column slides into the slot.

Airwheel S3, S5

Step 1: Remove the four (4) screws that are on either side of the Airwheel base.

Step 2: Place the provided adapters on the sides of the Airwheel base and use the attached four (4) screws to fasten them to the base.

Step 3: Place the BLUMIL unit on the Airwheel base and use the attached (4) corner screws to fasten it to the adapters. Place a washer underneath each screw.

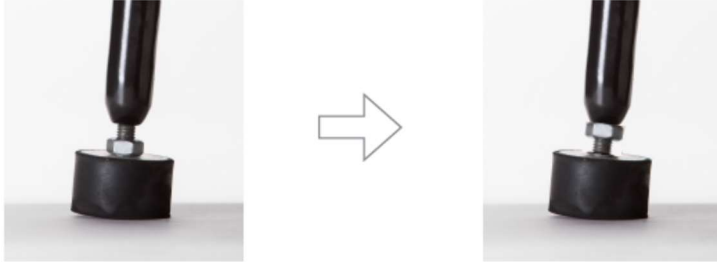
Step 4: Install the provided steering hub adapter. The attached Blumil steering column slides into the slot.

Adjustments

This adjustment process is simple and typically takes only 10 minutes. Now that the installation is complete there are just two adjustments that need to be made to ensure you are properly fitted to your BLUMIL.

Adjustment 1: The Landing Feet

To perform this adjustment, you must first place your assembled BLUMIL on a smooth level surface. Then begin by dismounting your BLUMIL and deploy the parking mechanism by pulling the parking lever until you hear the “click”. This sound indicates that your BLUMIL parking mechanism is securely locked. Now, look to see if both rubber feet are touching the ground. If they both make contact with the ground at the same time, you are all set. If they do not, then you must lower the second one to make contact until they both make contact with the ground at the same time. **It is crucial that you are sure the front and rear feet touch the ground at the same time.** Finalize this adjustment by tightening the retaining nuts against the tubes that the feet thread into.



TIP: Tire pressure and normal wear, can affect the landing feet. It is important that you periodically check and adjust the landing feet as needed.

TIP: Remember to re-adjust the Rubber Stands to the proper height when swapping from standard tires for custom tires.

Adjustment 2: Gravitational centering

Adjust the seat plate to position yourself so you satisfy the gravitational centering necessary for the Gyroscopic Transporter to effectively respond when you lean forward and backward for safe, controlled travel and stopping.

To perform this adjustment, place one hand on a solid surface. In one swift motion, fully retract the parking mechanism by pushing the lever.

If you drift forward while sitting upright, you are positioned too far to the front. To correct this issue, deploy the parking mechanism and dismount. Now loosen the 4 corner bolts that secure your Blumil to your Gyroscopic Transporter and slide the seat plate back a bit. Be sure to tighten the bolts before testing your new seating position.

If you drift backward while sitting upright, you are positioned too far to the rear. To correct this issue, deploy the parking mechanism and dismount. Now loosen the 4 corner bolts that secure your Blumil to your Gyroscopic Transporter and slide the seat plate forward a bit. Be sure to tighten the bolts before testing your new seating position. Please be aware, that only securely tightened bolts allow safe using of Blumil.

When the seat is properly positioned your Gyroscopic Transporter will remain stationary.

CAUTION: *This adjustment is unique for each rider's weight distribution which may vary slightly from person to person. It is crucial that you test for this before letting someone use your Gyroscopic Transporter with BLUMIL.*

CAUTION: *Slow or partial retraction of the Parking Mechanism can leave the BLUMIL unbalanced and lead to falls and injury.*

CAUTION: *If you do not have the strength to swiftly lift or press the parking lever, you should not attempt to ride your Gyroscopic Transporter with BLUMIL.*

Adjustment 3: Sensor plates

Always make sure that the plates are:

- Segway - above weight sensors
- Ninebot – in the middle of the gray matt
- Airwheel – see notice for Airwheel users on the next page

CAUTION: *If the metal plate is not positioned correctly, the Personal Transporter will not enter balance mode and may fall over, leading to injury.*



A special notice for BLUMIL S5 and S3!

Make sure, that the bars are set as close as possible to the red line, but no further than between two green lines, that is no further than 3 cm from the red line.

CAUTION: *If the bars are not placed in the way from the illustration below, the Blumil may lose its balance and fall.*



Riding the BLUMIL

Now that the BLUMIL and Gyroscopic Transporter base are one, and the assembled product is properly fitted to you, it is time to ride!

Here are some basic steps you should take to familiarize yourself to the unique riding style of BLUMIL. BLUMIL is an incredible device, but it is not a toy. It must be treated with respect. Pay particular attention to the warnings and instructions given in the Gyroscopic Transporter and BLUMIL manuals.

Follow all Gyroscopic Transporter and BLUMIL safety guidelines when riding. Always wear a helmet – seriously!

For your first ride with BLUMIL, begin on a flat surface with good traction, and free from obstacles overhead or underneath.

CAUTION: *Be sure that you have followed the adjustments section of this manual prior to riding. Failure to do so could result in un-centered positioning, putting you at risk of serious injury.*

CAUTION: *Do not attempt to ride on challenging terrain until you are well experienced with BLUMIL.*

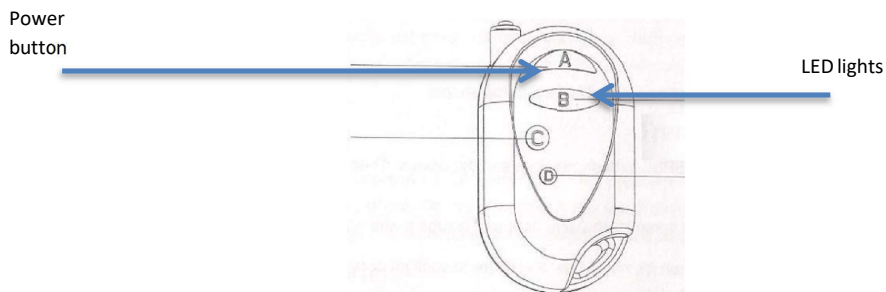
CAUTION: *You must have an even and smooth surface to deploy the parking mechanism. Ensure both legs touch the ground at the same time. If you need to engage the parking mechanism while going uphill you must do so while oriented perpendicularly to the hill (with one shoulder facing uphill and the other facing downhill).*

Switching on/off

Prior to riding your Blumil, you need to switch it on.

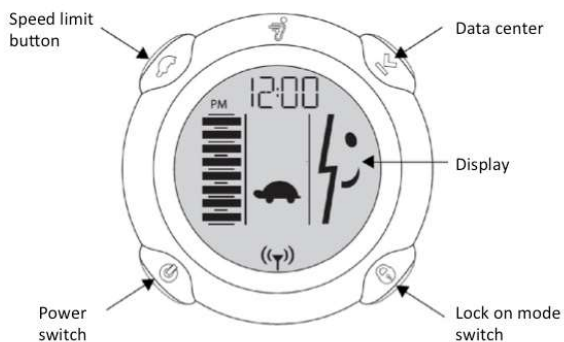
Blumil S3 and Blumil S5:

To turn the Blumil on, you need to activate the base first, by switching on the power button. Then, you need to use the remote. Push the A button on the remote and listen for the beep sound – it means your vehicle is on. The same button shall be used to switch the Blumil off. If you don't plan for using the Blumil in a while, deactivate the base in order to save the battery.



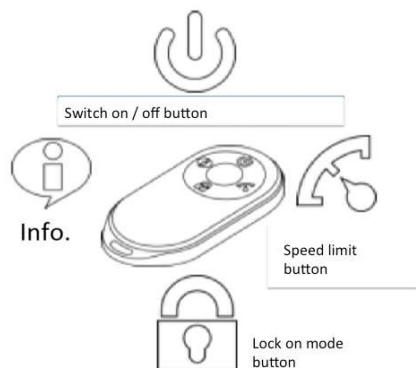
Blumil i2 and x2

Press the Power button to switch the Blumil on. If you press it for 2 seconds, the Blumil will be switched off.



Blumil for Ninebot

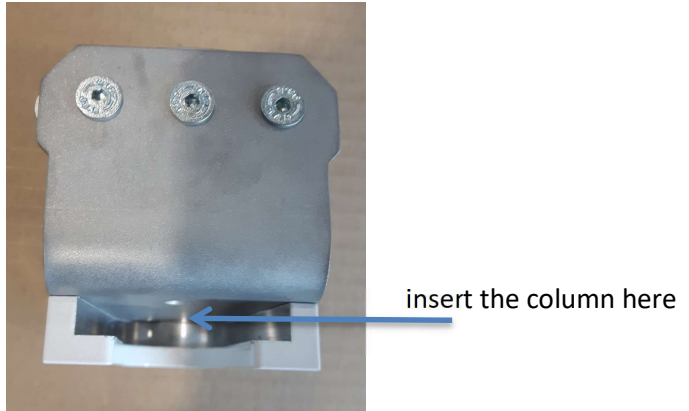
Press the Power button to switch the Blumil on. If you press it again, the Blumil will be switched off.



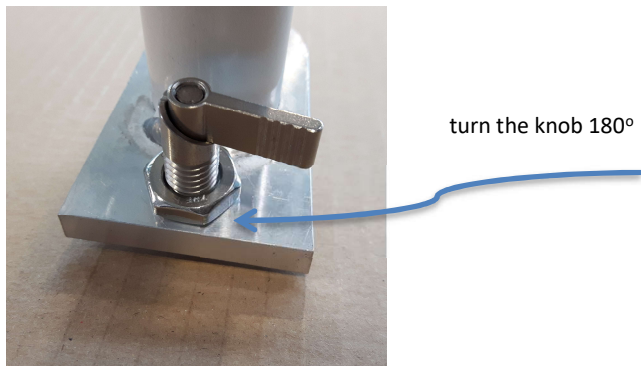
Steering column installation

In order to ride Blumil you need to install the steering column into its slot, and block it with the knob.

Steering column slot (illustration):



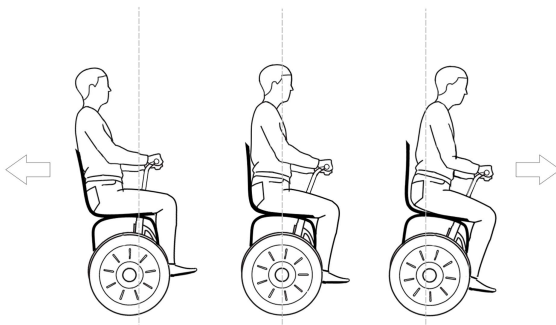
Blocking the steering column with the knob (illustration):



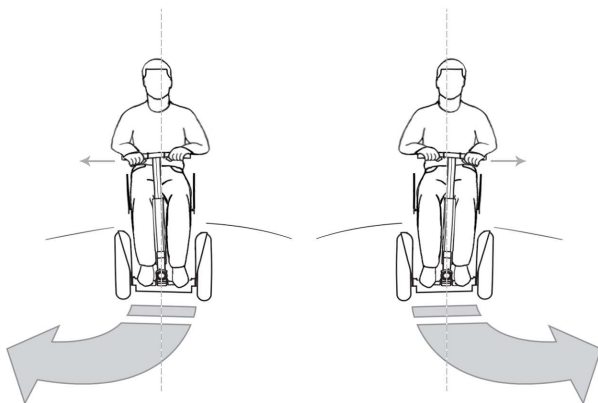
Controlling the Blumil

Turn the power on using the remote, or the base (in case of Airwheel) and check by slight motion if the control lights are on, signaling the batteries are on. Then release the parking mode by swiftly moving the handle. Slightly lean forward to start moving. To accelerate lean more. Be careful – until you master riding the BLUMIL, do not move with full speed. To reverse, slightly lean back. To stop, move your body to upright position. To turn move the steering column left or right. Always remember, that due to changed center of gravity, Blumil has long braking range. Stay alert, particularly when moving among other people or vehicles. Never turn the parking mode on while riding – that may result in fall and injury! If the battery is low, stop and turn on the parking mode.

Drawing 1. moving forward/backward and braking



Drawing 2. Turning left and right

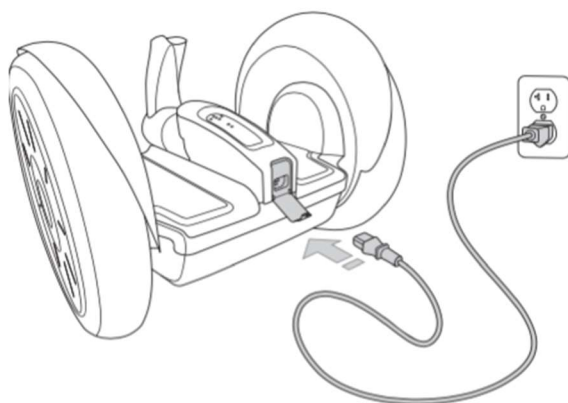
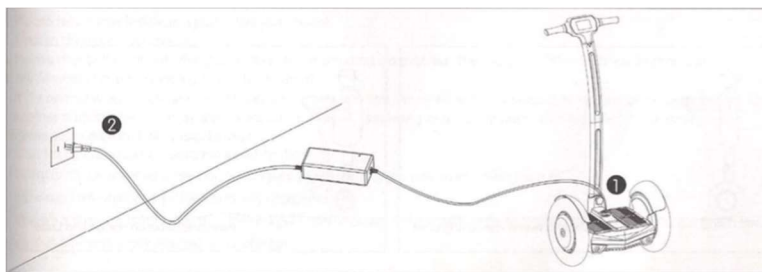


Mounting and dismounting the Blumil

To mount or dismount the Blumil, turn on the parking mode. Then remove the steering column, and put it aside. Put your hands firmly on the seat and move your body to the edge, then move your feet to the ground, while supporting yourself on your right hand (if getting off on the right side). Then lean forward and move your body (dynamically pushing with your hand if possible) to your next seat, until your back is resting. Mounting the Blumil is similar, you just push with your hand from the seat onto the Blumil.

Charging the Blumil

Insert the charger into 220V socket, and then plug in the charger into the vehicle.



Blumil Warranty

BLUMIL Limited Warranty

BLUMIL is covered by a 1 year manufacturer's warranty against any defects in materials and workmanship, beginning on the date of purchase, and only for the original purchaser under non-commercial use. Any replacement part or product that has been installed in accordance with the seller's instructions assumes the remaining original warranty or a maximum of 90 days from the date of repair or replacement, whichever is longer.

Procedure for Warranty Service

Prior to returning any part or product for warranty service, you must first contact the certified reseller from whom you purchased your BLUMIL product. If no such reseller exists, you must contact BLUMIL via email at info@blumil.com. If the part or product in question is found to be defective and warrantable you will be responsible for shipping the part or product back to BLUMIL or the certified reseller from whom you purchased your BLUMIL product. BLUMIL or the certified reseller shall be responsible for return shipping to you. If product is not warrantable, you may purchase a replacement part and must pay for shipping.

Warranty Exclusions

The BLUMIL warranty does not cover and shall be void for defects or damages resulting from casualty, accident, collision, inclement weather, water damage, misuse or abuse, neglect, alterations, improper installation, operation, or maintenance. This is NOT a warranty of the Gyroscopic Transporter or any Gyroscopic Transporter components. Gyroscopic Transporter warranty issues must be addressed directly with Gyroscopic Transporter Manufacturer.

Disclaimers

Segway® is a registered trademark of Segway Inc., Blumil is not affiliated with, has not been reviewed or endorsed by Segway Inc. The Segway® limited warranty does not cover damages to the Segway® resulting from alterations or modifications to the vehicle, including but not limited to the installation of the BLUMIL seating system.

Ninebot® is a registered trademark of Ninebot Inc., Blumil is not affiliated with, has not been reviewed or endorsed by Ninebot Inc. The Ninebot® limited warranty does not cover damages to the Ninebot® resulting from alterations or modifications to the vehicle, including but not limited to the installation of the BLUMIL seating system.

Airwheel® is a registered trademark of Airwheel Ltd., Blumil is not affiliated with, has not been reviewed or endorsed by Airwheel Ltd. The Airwheel® limited warranty does not cover

damages to the Airwheel® resulting from alterations or modifications to the vehicle, including but not limited to the installation of the BLUMIL seating system.